



# IceBreak Client Services

## ... for a closer integration to Windows

*Create new possibilities  
with closer integration*

*IceBreak Client Services creates a closer integration between the Web Server and the Client Windows platform. The connection can integrate Web-applications with Windows functions on the individual client – and create up to now unknown possibilities.*

IceBreak Client Services contains a number of services, which can be installed within the client standard Windows SysTray. These services are published via download from the Internet and installed via a user-friendly "Install Shield".

The connection between IceBreak Server and IceBreak Client Services uses services, which will transport information using the open Internet. This is done via the http-protocol with a secure 128 bit data encryption.

### IceBreak Web Printing

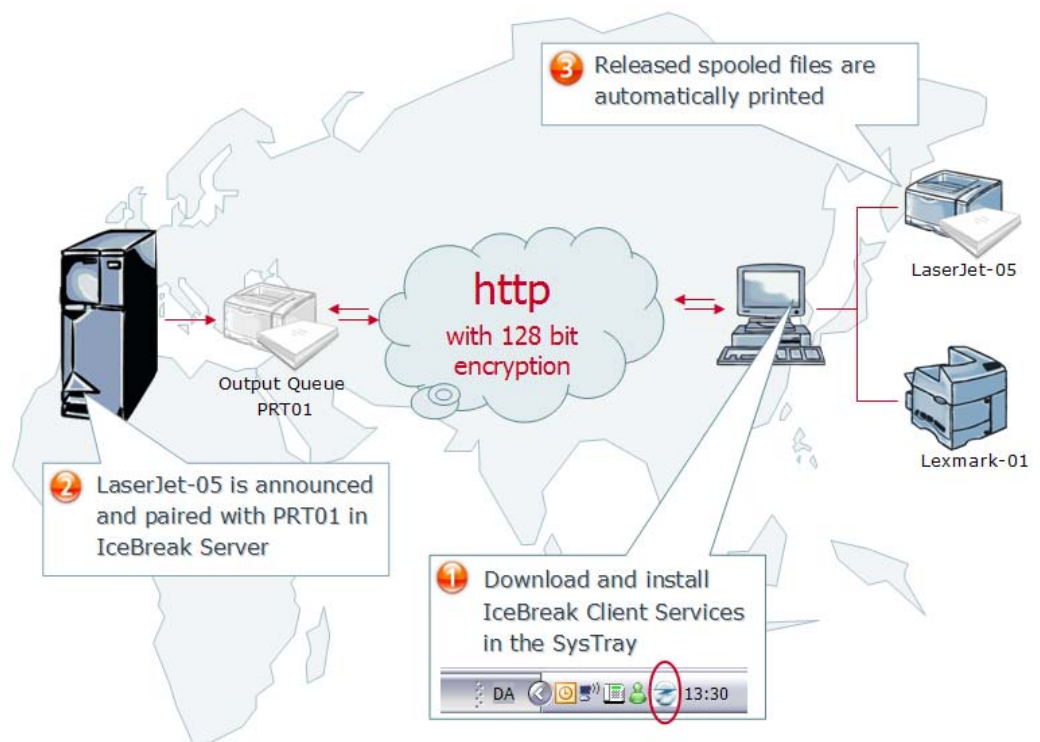
The demand for printing documents on external printers is increased in line with the increased outsourcing of stock, production and distribution.

The operating system opens a possibility for creating output queues under IBM Client Access – but this requires that the sub-supplier is given access to the company network. Often such a set-up requires a visit to the sub-supplier and a VPN-connection. This can be complicated and expensive, caused by the number of sub-suppliers or the distance between them and the company.

IceBreak Web Printing does not require access to the company network, as it runs over the Internet. The Service runs independently from the Internet Browser – and can print documents without the user being logged on to the PC.

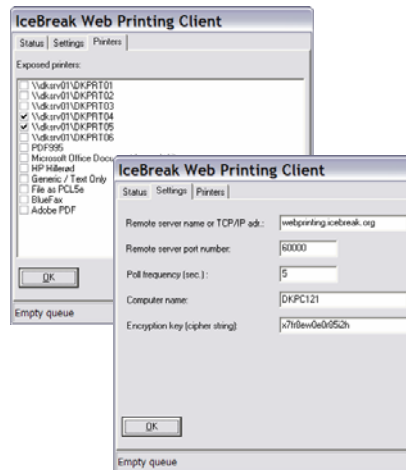
An unlimited number of print queues can be created under OS/400 and is handled with IceBreak Client Services.

Using "Host Print Transform" it is indicated on the print queue which type of printer the recipient uses.





IceBreak Web Printing contacts the IceBreak Server with frequent intervals and if a print is "ready" it will be processed via "Host Print Transform" and transferred to the Windows printer. The solution can handle all known printer models within "Host Print Transform".



This service can supplement IBM Personal Communication with the missing function to create OS/400-printers for Citrix-users.

## IceBreak Snowflake

Snowflake is a free IceBreak Client Service, which can assist the programmer when developing IceBreak programs. Snowflake gives direct access to the administration menu, code snippets, manuals and conversion tools on the IceBreak server.

This simple service can be used from all web-design tools under Windows. With a click on the icon in the Windows SysTray, it is possible to select the relevant programming example, and insert it on the correct place in the program via Windows Clipboard.

## IceBreak Tapi

Today most telephone solutions are delivered with a standardised Windows interface (TAPI). The IceBreak Client Service connects this interface with the web-applications, so that the applications are closely integrated with the telephone solution.

With IceBreak Tapi a telephone call can initiate an information search, using the telephone number, resulting in display of relevant information in the web-application. In the same manner the web-application can control the telephone when typing a phone number, registration to and deregistration from groups and begin/end telephone conversations.

Web Printers x

Remote Web Printer

Options

Refresh Document

Web Printers

Web Printers	Printer properties				
	Output Queue	Library	Status	Driver	Last Access
DKPC121					
\\dkrsrv01\DKPRT04				*HP4	2007-07-24
\\dkrsrv01\DKPRT05	MHO3	QUSRSYS		*HP4	2007-07-24
IBM-D58E997FD3					
LANPC10					
HP DeskJet 6980 series					2007-07-24
\\dkrsrv01\DKPRT03	HP3456	QUSRSYS		*HP4	2007-07-24
\\dkrsrv01\DKPRT06					2007-07-24
\\TIOADM\hp deskjet 5550 series					2007-07-24
\\TIOADM\HP LaserJet 3150					2007-07-24
MHO					
SB-N203A-01					

## The IceBreak product line ...

### Enterprise

The IceBreak Enterprise allows you to build web applications on the System i (AS400) server platform. The Enterprise edition will let you develop and execute all types of web applications based on RPG, CL & COBOL. You can build new programs or enhance your existing applications.

### Server

Using the IceBreak Server, it is possible to execute IceBreak programs - it is however not possible to change or amend the programs.

### Inspire

The free IceBreak Inspire edition is a powerful tool for anybody who works with SQL and Queries. In an instant you can present your existing Query Reports in a spreadsheet - in a browser on the WEB, or locally in your own Intranet.

It is very easy to structure and organize your existing Queries. All Queries can be collected in different groups, making navigation a simple task. Users can access the queries via OS400 logon.

