



Install IceQuery

Please Note:

The current version of IceQuery is depending on some IceCap objects to run.

You will consequently need to install the free IceCap trial version **BEFORE** you install IceQuery.

This is a temporarily measure and the objects will eventually be embedded in the product during 2011.

The installation process of IceQuery and IceCap is identical for the two products. This document describes IceQuery only - but it can also be used when installing IceCap.

IceQuery is installed from within the 'IceBreak Application Store' - so you must make sure that have IceBreak installed on your System i™(AS/400).

Read about the 'Application Store' <http://www.system-method.com/Download/AppStore>

The free IceBreak version can at all times be downloaded from:

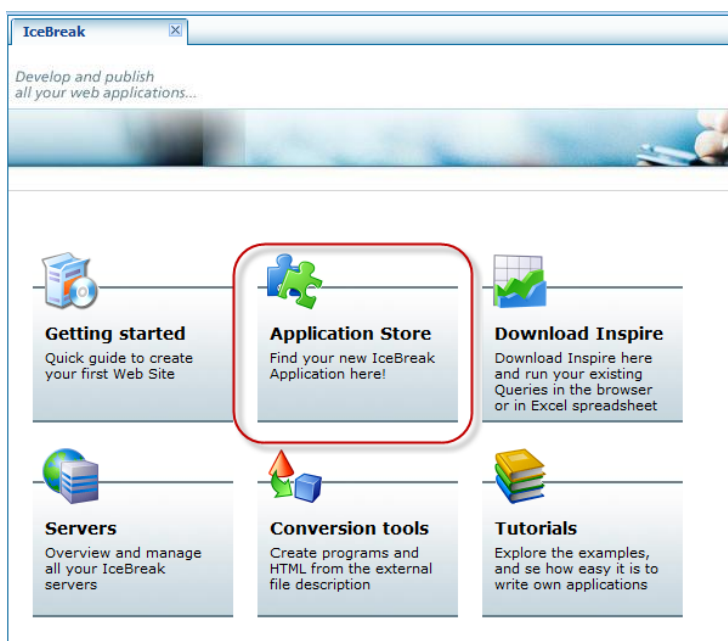
<http://www.system-method.com/Download/IceBreakCE>

Then have in mind that the installation of IceQuery is performed in two steps.

1. Install IceCap
2. Install IceQuery

How to Install.

Open the IceBreak Administration Menu and Select 'Application Store'.

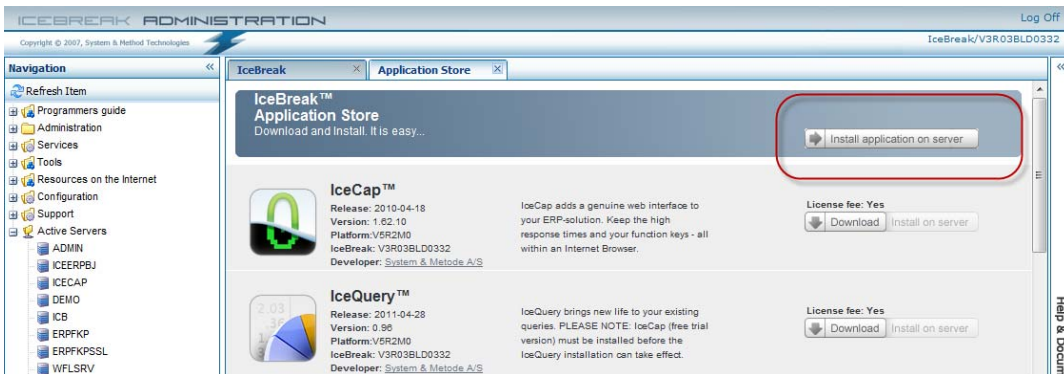


(Locate IceCap and press Download)

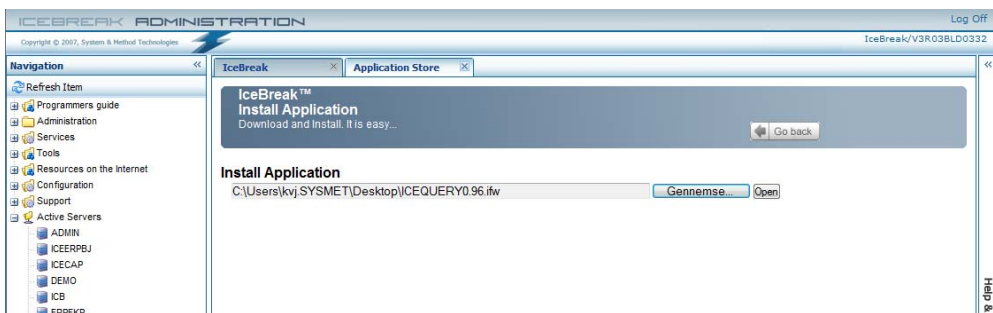
Locate IceQuery and press Download



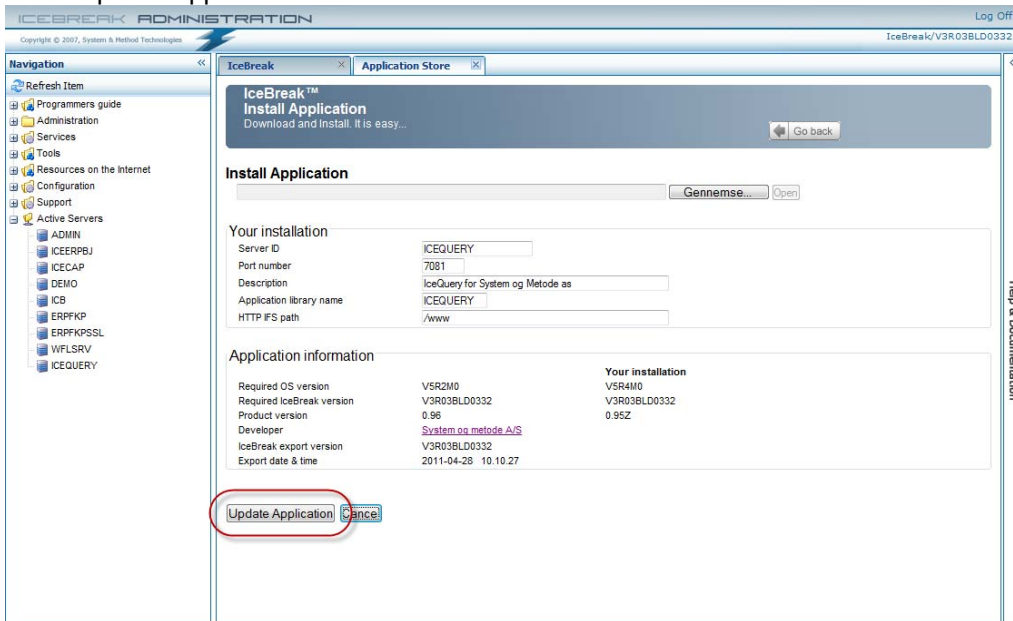
Save the .IFW file on you desktop.
Press "Install application on Server"



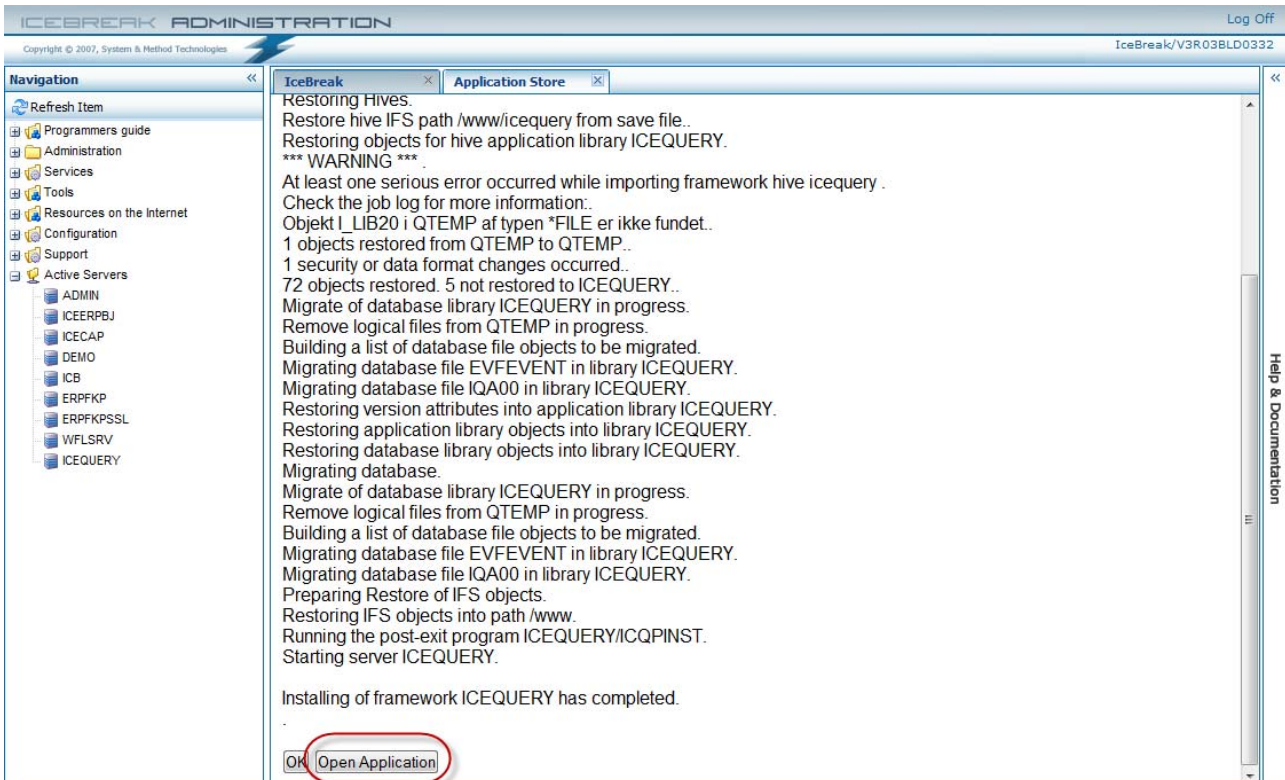
(Locate the IceCap file on your desktop)
Locate the IceQuery file on your desktop



Press 'Update Application'



Then press 'Open Application' to open IceQuery in a browser.



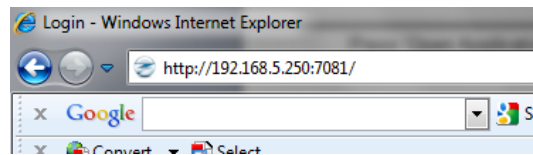
'OK' will end the installation and close the tab. (You can use 'OK' when you end the IceCap installation).

The IceQuery application can at all times be opened in a browser.

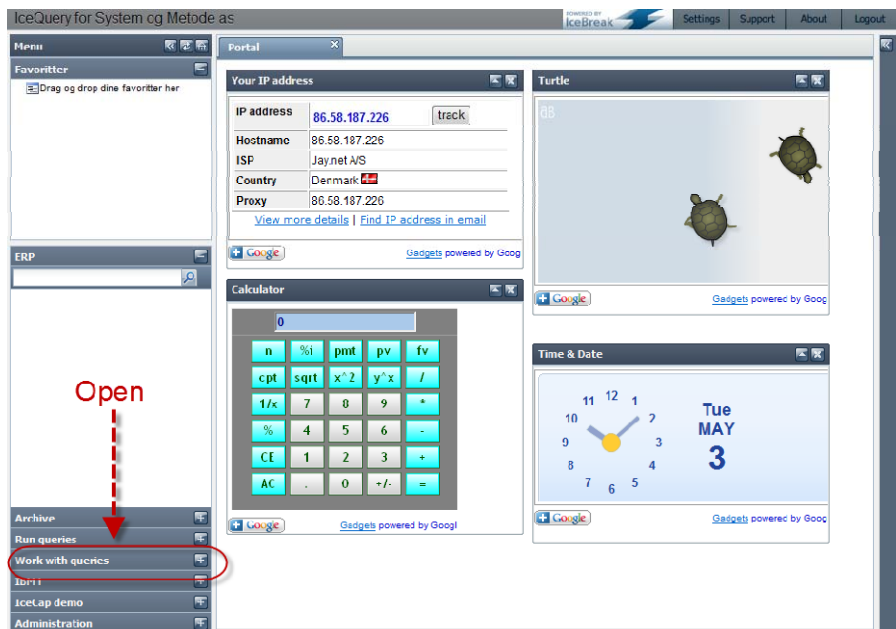
Use the IP number of your System i™
IceQuery defaults to Port 7081

Log on using your (System i™) user ID and Password.

Note: This panel can differ in layout.



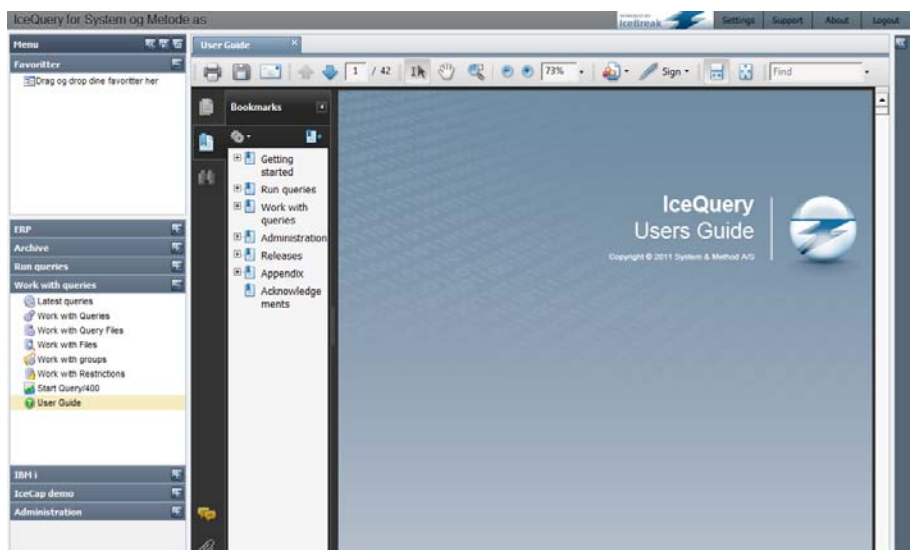
IceQuery will open in a browser displaying this panel.



Locate and open the
'Work with Queries' menu.

Then locate and open the
'IceQuery Users Guide'.

**Read the User Guide and you
are ready to start working
with IceQuery.**



IceQuery license key.

First time installation will automatically activate IceQuery in a 30-day free trial mode.

Contact your supplier for a key - if you need a license key for trial extension or a permanent installation.

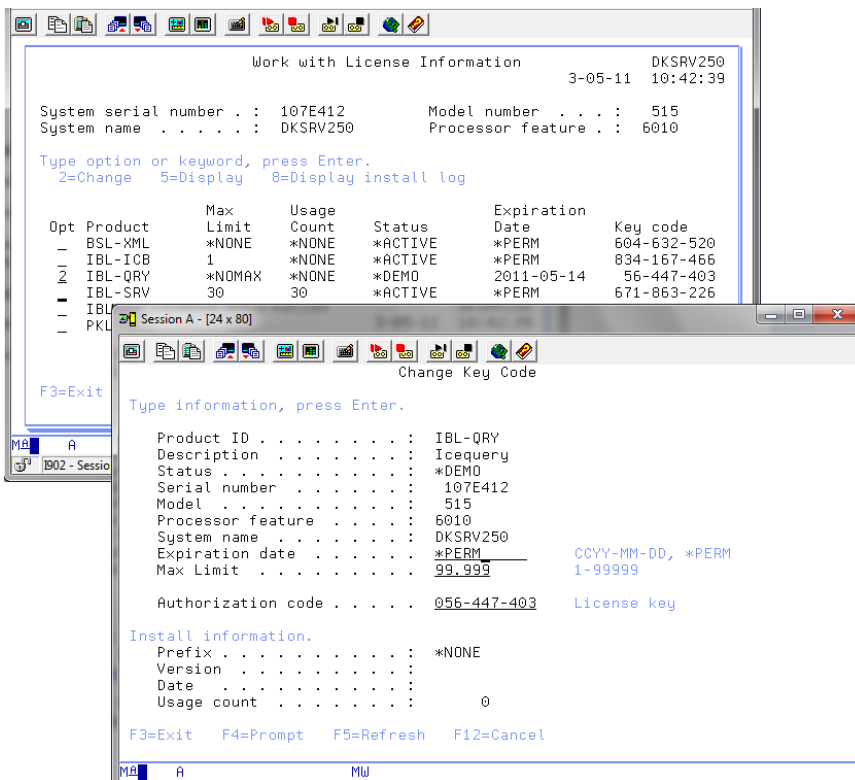
Enter the IceQuery license key:

Log on to your System i™(AS/400).

Type: *Go IceBreak*
on a command line.

Select option 50 "Work with license information"

Locate IBL-QRY and use 2=Change
Enter the license key provided by the supplier and press Enter.



Your supplier will ask you for Model, Processor Feature Code and Serial number. These values can at all times be located in the two panels mentioned above.

System & Method Support Team

Open all workdays 8.30 to 16.30 CET.

Contact support via e-mail. support@system-method.com

Contact support via phone: +45 70 20 38 10

