

Important Note

When upgrading past BlueSeries SMS V6.R1 PTF88.

It is now possible to add multiple GSM lines to BlueSeries SMS.

This means that the settings in GSM unit information is moved from

Option 15 "Work with System values"
to
Option 12 "Work with teleoperators, phone lists and GSM lines"

Your GSM settings might be deleted in the upgrade. So you will - before upgrade - need to take screenshots of first and last panel in Option 15 "Work with System values".

Run the upgrade to installation BlueSeries SMS V6.R2

From the SMS menu; select Option 12 "Work with teleoperators, phone lists and GSM lines".

Use 2=Change on *GSM and fill in the values.

Description: Any text e.g. GSM modem
Protocol: 12 (Use F4 list)
Operator country code: From SIM card
Operator phone number: From SIM card
Senders country code: Location of iSeries

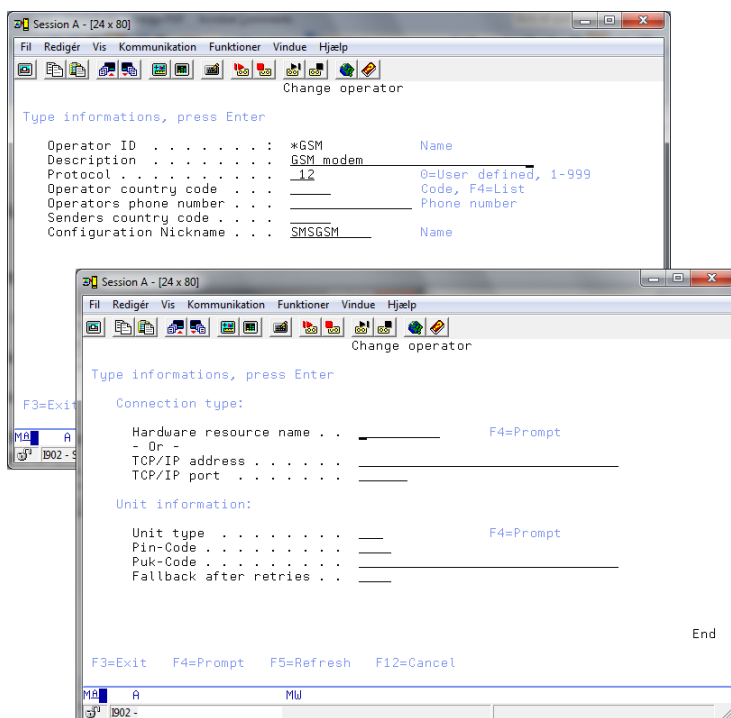
* Scroll to next page *

Fill in the values for
'Connection type' and 'Unit information'.

Press Enter.

Installations with one (1) GSM line:

Select Option 15 "Work with System values"
Scroll to last panel
Make sure that 'Connection Priority List' is set
to G=GSM.



Installations with two or more GSM lines - or one GSM line in combination with Gateway:

Select Option 15 "Work with System values"
Scroll to last panel
Make sure that 'Connection Priority List' is set to O=Operator.